

Install AmyUni PDF Driver

To install the PDF drivers, you need to run the PDF Install program and then make sure it was assigned to an empty PDF Port.

Install PDF Drivers

To install the PDF drivers, open windows explorer, go to folder BASE on your network drive, and find INSTALL (application file) and click on it.

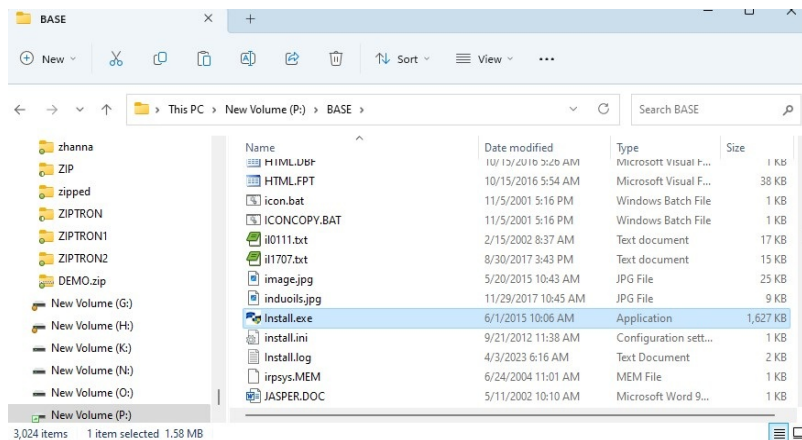


Figure 1 Find Install.exe and click on it to run the install.

In the example above, my network drive is the P drive, I am in the BASE folder, Install.exe is highlighted, and click to run the program.

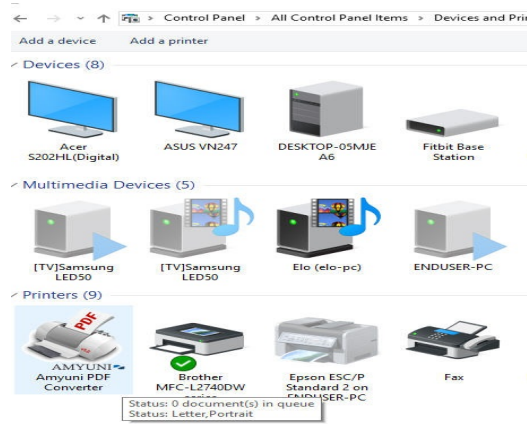
Configure AmyUni Printer Port

The program will install and now you have to configure the port with the instructions below.

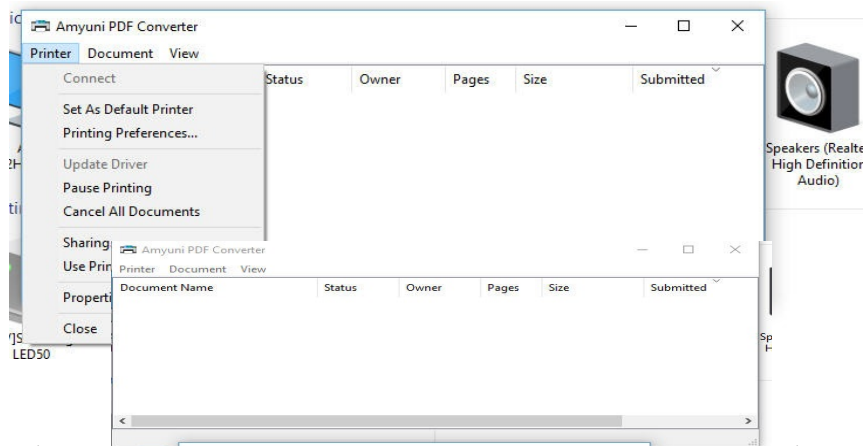
Go to control panel and select Devices and printers.



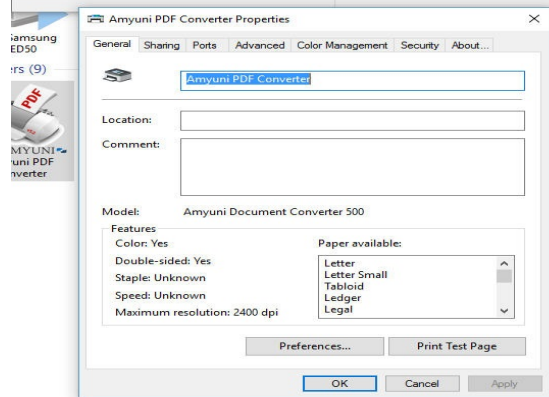
Now click on the AmyUni Printer.



Click on the option above that says Printer.

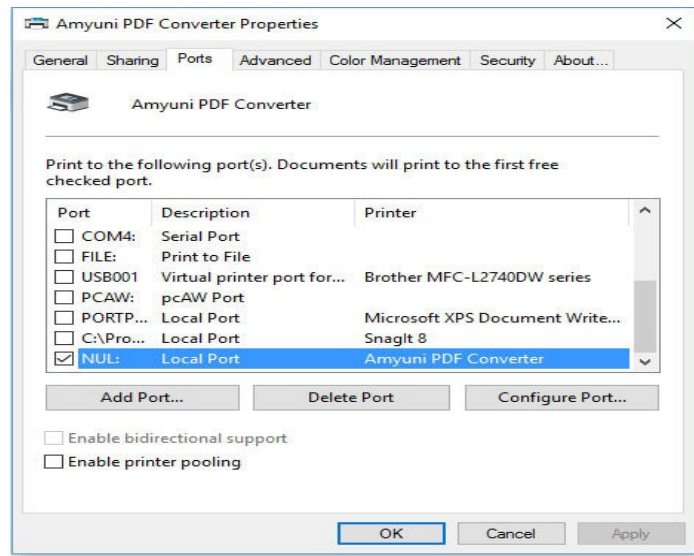


From the Printer drop down menu, select Properties.



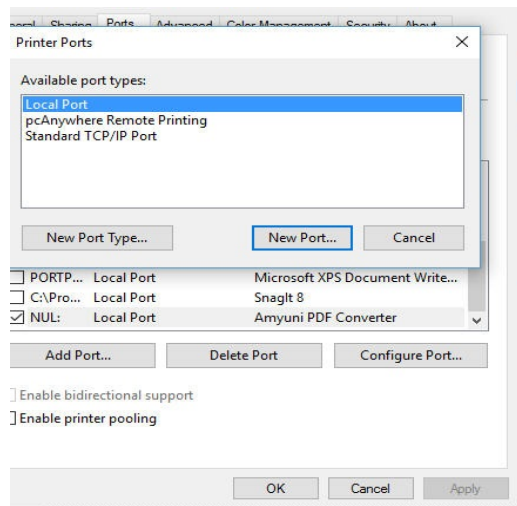
down menu, select

No click on the tab above that says Ports.

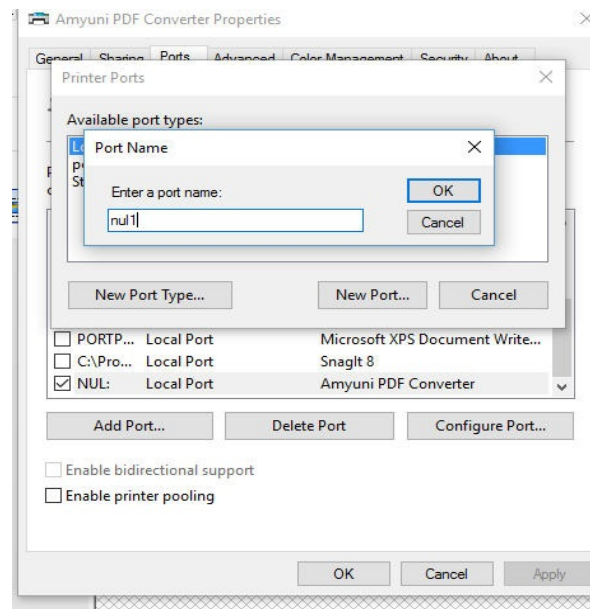


If you see a port named NUL1 then make sure it has a checkbox and you are done.

If not then click on Add Port.



Select Local Port and click on the button that says New Port.



It says enter Port Name, type in NUL1. That click on the Close button.

The NUL1 port should display with a check mark. If not, put a check mark on it.

Now click on button Apply (below).

Now click on button OK (below).

Not close the windows and test the program by trying to email 1 invoice from the invoice inputer program.